

Attachment A. Maps and Photos
Repair of Created Stormwater Treatment Wetland
RFQ 19-035

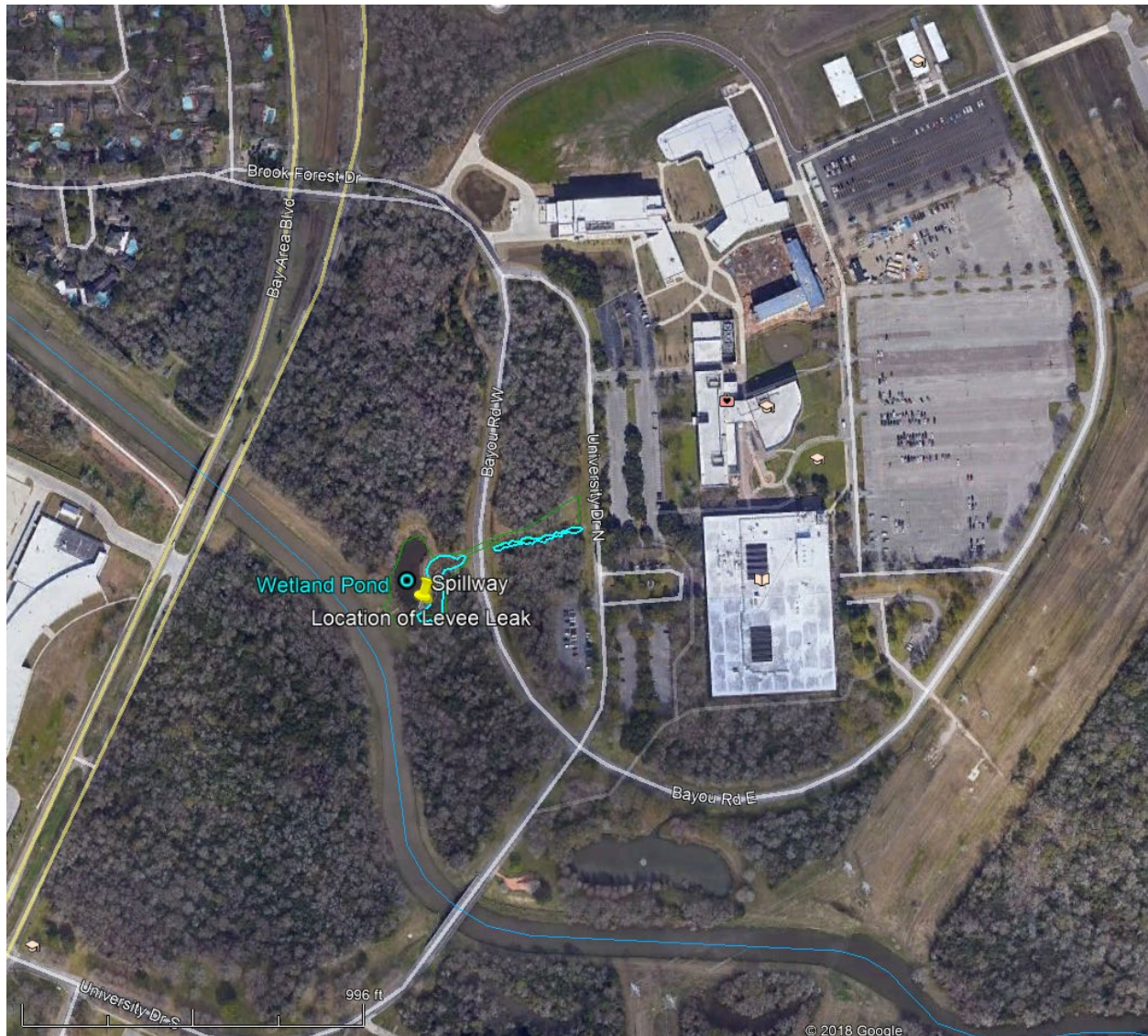


Figure 1. Location of wetland complex (outlined in blue) on UHCL campus.



Figure 2. Location of primary and secondary wetland and levee leak.

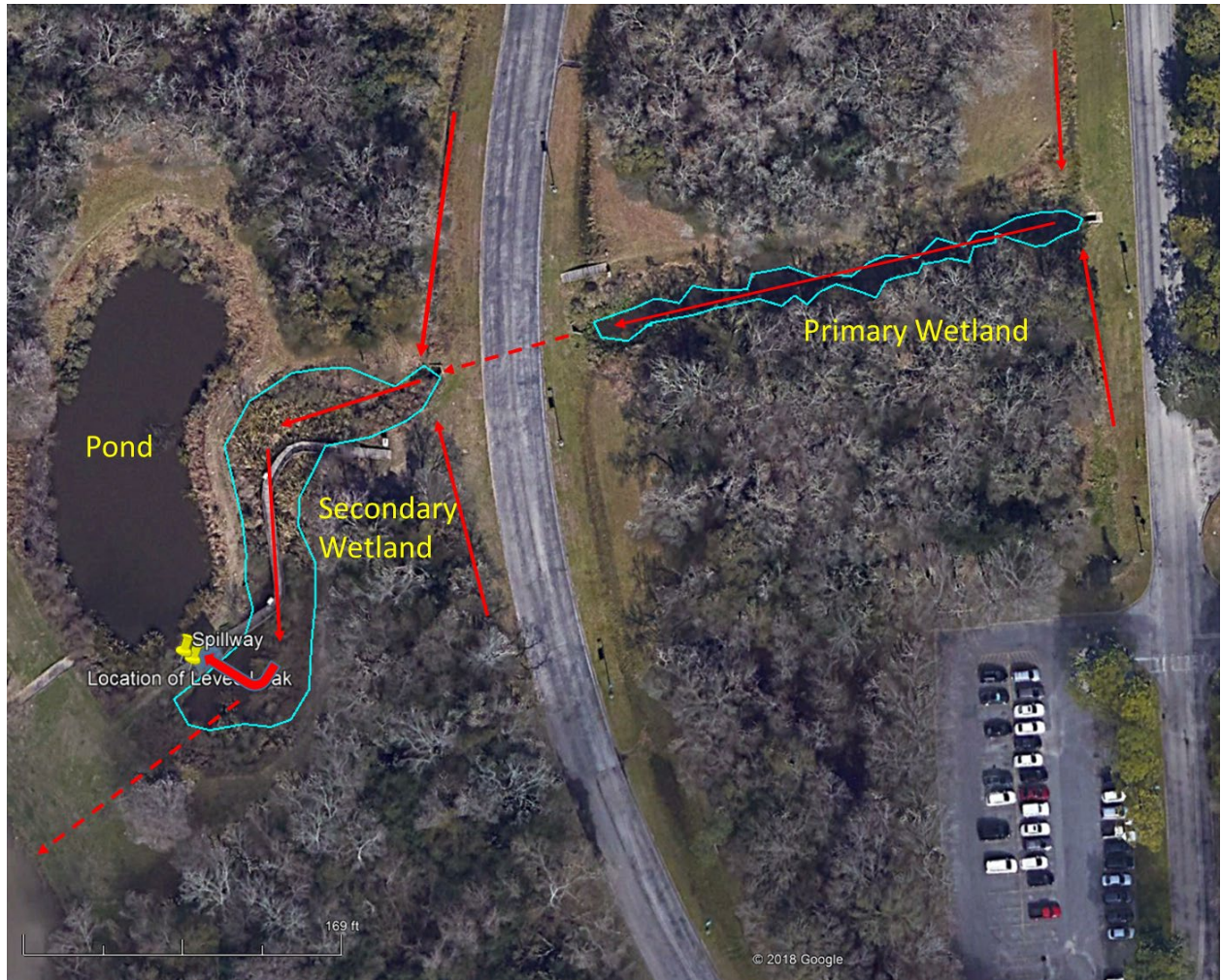


Figure 3. Flow path into wetland complex showing major pathways. Dashed line – under culvert and emergency overflow from bayou levee during high flows.



Figure 4. Estimated 19 acres watershed contributing to the wetland complex.

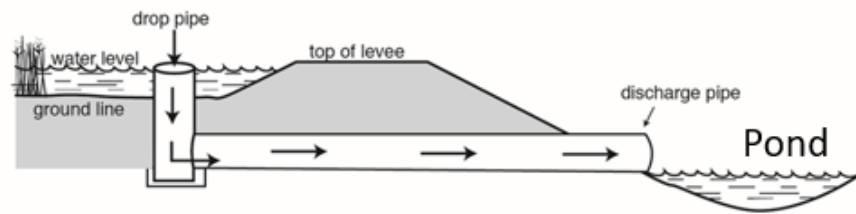


Figure 5. Erosion of levee around the spillway weir. Facing upstream from pond into primary wetland complex.



Figure 6. Levee erosion on the left side (looking downstream from the wetland to the pond) of the weir spill way

a.



b.

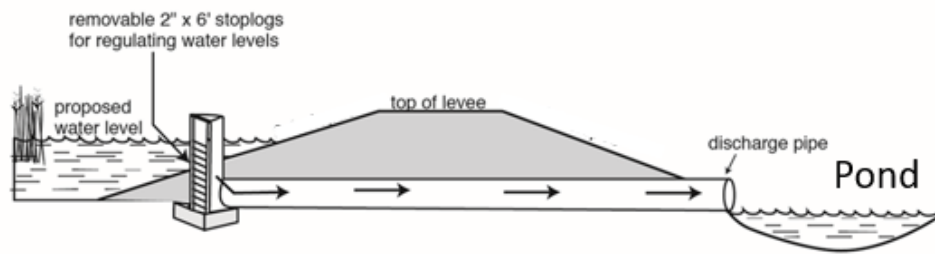


Figure. 7. Examples of drainage system envisioned for repaired wetland levee and installed drainage system.